



RENOVATION OF THE LÖTSCHBERG MOUNTAIN TUNNEL

KANDERSTEG (CH)

EMPLOYER

BLS AG, CH-3001 Berne

DESIGNER

Ingenieurbüro Heierli AG, CH-8006 Zürich (client part)
Ingenieurgesellschaft Emch+Berger, CH-3001 Berne &
ILF Beratende Ingenieure AG, CH-8048 Zürich (contractor part)

TIME OF COMPLETION

08.2018 - 10.2022

CONTRACT SUM

CHF 98 Mio

EXECUTION OF THE WORK

ARGE Marti LBST

CONSORTIUM PARTNERS

Marti Tunnel AG, CH-3302 Moosseedorf
Marti AG Bern, CH-3302 Moosseedorf

LEAD COMPANY – TECHNICAL AND COMMERCIAL LEAD

Marti Tunnel AG, CH-3302 Moosseedorf

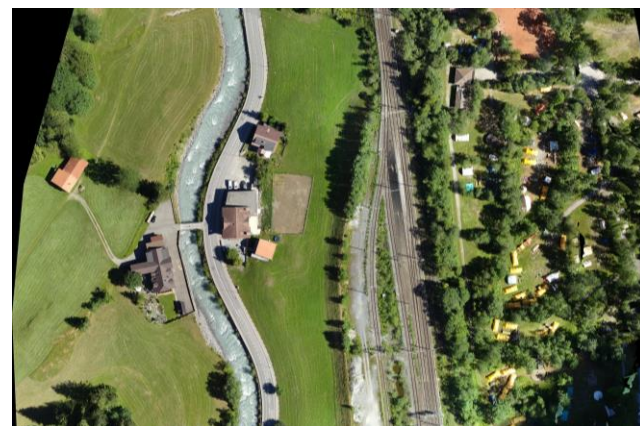
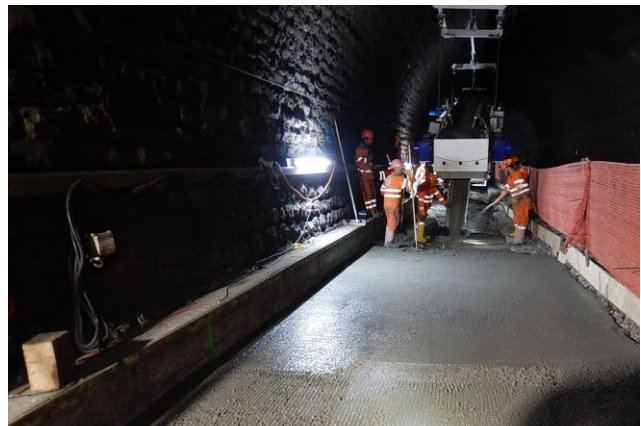
RENOVATION OF THE LÖTSCHBERG MOUNTAIN TUNNEL KANDERSTEG (CH)

SCOPE OF THE WORKS

Renovation of Lötschberg mountain tunnel tracks and adaptation of drainage system.

ACTIVITIES

- Adaptation of drainage systems in the tunnel and on the Kandersteg side
- Creation of cable protection systems
- Escape route training with level adjustment niches
- Reinforcement of ballasted tracks and installation of the railways tracks
- Adaptation of catenary system
- Adjustment of safety system



09.11.2018



Marti Tunnel AG

Seedorffeldstrasse 21 3302 Moosseedorf Tel. +41 31 388 75 10 www.marti-tunnel.ch tunnel@martiag.ch