

RENEWAL RITOM HYDROELECTRIC POWER STATION PIOTTA (CH)

EMPLOYER

Ritom SA,
c/o FFS SA
Infrastruttura, Energia, Grandi progetti Energia,
Industriestrasse 1
CH-3052 Zollikofen

DESIGNER

Consorzio Ritom Ticino (CRT),
c/o IM Maggia Engineering SA,
Via Francini 5,
CH-6601 Lugano

SITE SUPERVISOR

Consorzio Ingegneri CORI,
c/o Renzo Tarchini Cantieri & Contratti SA,
Via Montarina 19,
CH-6900 Lugano

Marti Tunnel AG

Seedorffeldstrasse 21 CH-3302 Moosseedorf Tel. +41 31 388 75 10 www.marti-tunnel.ch tunnel@martiag.ch

TIME OF COMPLETION

11.2018 – 05.2022

CONTRACT SUM

CHF 81 Mio.

EXECUTION OF THE WORK

Consorzio Marti-Ferrari Ritom

CONSORTIUM PARTNERS

Marti Tunnel AG, CH-3302 Moosseedorf
Mancini & Marti SA, CH-6501 Bellinzona
Ennio Ferrari SA, CH-6527 Lodrino

LEAD COMPANY – TECHNICAL AND COMMERCIAL LEAD

Marti Tunnel AG, CH-3302 Moosseedorf

RENEWAL RITOM HYDROELECTRIC POWER STATION PIOTTA (CH)

SCOPE OF THE WORKS

Renewal Ritom hydroelectric power station

- Pressure gallery, total length = 2'300 m
- Power plant building Ritom
- Equalizing basin 100'000 m³

ACTIVITIES

Installation site Piora (1847 m):

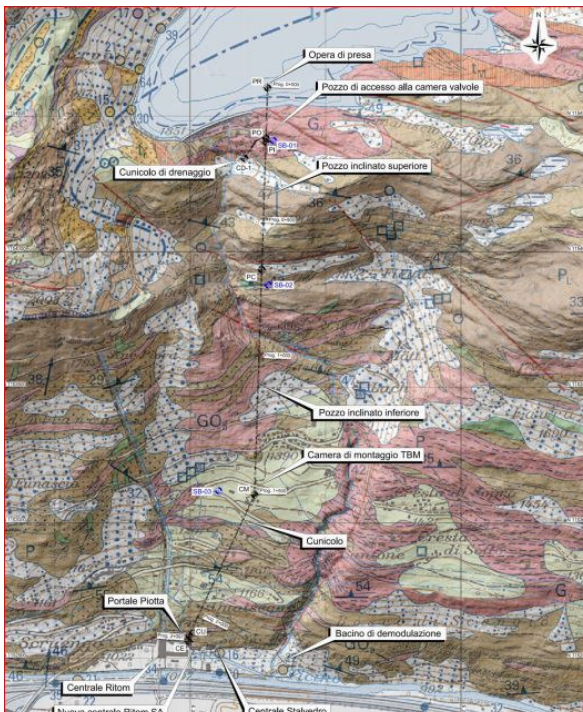
- Drill and blast access shaft T = 35 m, 82 m²
- Drill and blast valve chamber 3'200 m³
- Drill and blast upper pressure gallery L = 142 m, 12 m²
- New water intake Lake Ritom

Installation site Piotta (1001 m):

- Drill and blast lower pressure gallery L = 575 m, 20 m²
- Drill and blast assembly cavern TBM
- Excavation of inclined shaft with Gripper-TBM Ø = 3.23 m
- Lower inclined shaft 42% L = 880 m
- Upper inclined shaft 90% L = 633 m
- Drill and blast, 3 distribution galleries L = 54 + 46 + 29 m, 7 m²
- Power plant building Ritom
- Equalizing basin 100'000 m³

GEOLOGY

- Paragneisses
- Orthogneisses



12.03.2019



Marti Tunnel AG

Seedorfeldstrasse 21 3302 Moosseedorf Tel. +41 31 388 75 10 www.marti-tunnel.ch tunnel@martiag.ch