



TUNNEL DES NATIONS - LOS 1 + LOS 2

GENEVA (CH)

EMPLOYER

République et canton de Genève; DETA / DGGC,
CH-1213 Petit-Lancy

DESIGNER

Groupement NATIF, p/a T-Ingénierie; CH-1211 Genève

TIME OF COMPLETION

09.2017 - 12.2020

CONTRACT SUM

CHF 66.3 Mio.

EXECUTION OF THE WORK

Groupement Tunnel Nations

CONSORTIUM PARTNERS

Marti Construction SA, CH-1217 Meyrin
Marti Tunnel AG, CH-3302 Moosseedorf

LEAD COMPANY

Marti Construction SA, CH-1217 Meyrin

TECHNICAL AND COMMERCIAL LEAD

Marti Tunnel AG, CH-3302 Moosseedorf

TUNNEL DES NATIONS - LOS 1 + LOS 2

GENEVA (CH)

SCOPE OF THE WORKS

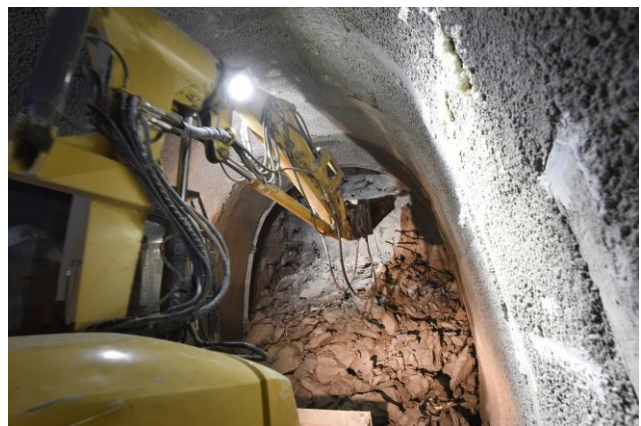
Underground motorway junction joining the airport with the Palais des Nations.

ACTIVITIES

- Tunnel 490 m
- Cut and cover section 380 m
- Advance in subdivided section with top, bench and invert
- Pipe umbrella and long anchors as geotechnical measures
- Arches and shotcrete

GEOLOGY

- Clay and loamy layers
- Sand
- Gravel (7a and some 9a)
- Groundwater lowering with filter wells



02.04.2019



Marti Tunnel AG

Seedorffeldstrasse 21 3302 Moosseedorf Tel. +41 31 388 75 10 www.marti-tunnel.ch tunnel@martiag.ch