



# **TUNNEL KATZENBERG**

## **BAD BELLINGEN (DE)**

### **EMPLOYER**

DB Projektbau GmbH, DE-76137 Karlsruhe

### **DESIGNER**

Planungsgemeinschaft Katzenbergtunnel  
Ed. Züblin + Wayss & Freytag Ingenieurbau

### **CONSTRUCTION PERIOD**

08.2003 – 10.2010

### **CONTRACT SUM**

CHF 400 Mio.

### **EXECUTION OF THE WORK**

ARGE Katzenbergtunnel

### **CONSORTIUM PARTNERS**

Ed. Züblin AG, DE-70435 Stuttgart  
Wayss & Freytag Ingenieurbau, DE-60489 Frankfurt  
Marti Tunnel AG, CH-3302 Moosseedorf  
Jäger Bau GmbH, AT-6780 Schruns

### **LEAD COMPANY AND TECHNICAL LEAD**

Ed. Züblin AG, DE-70435 Stuttgart

### **COMMERCIAL LEAD**

Wayss & Freytag Ingenieurbau, DE-60489 Frankfurt

# TUNNEL KATZENBERG

## BAD BELLINGEN (DE)

### SCOPE OF THE WORKS

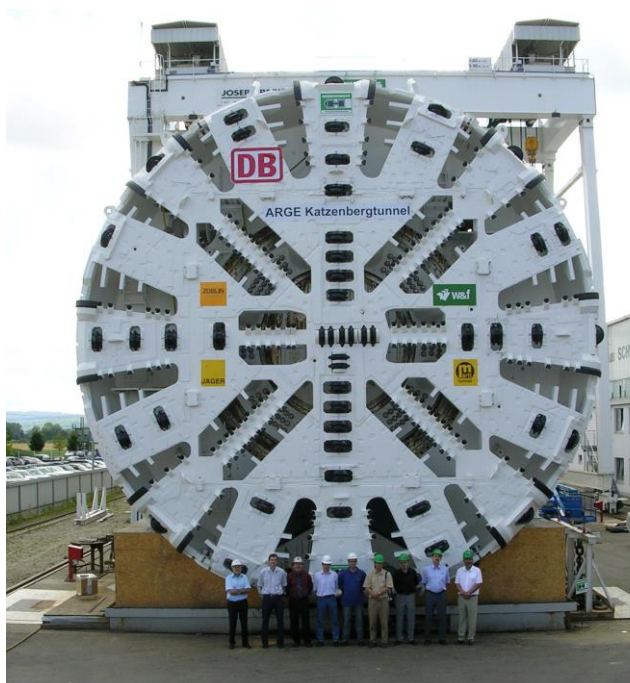
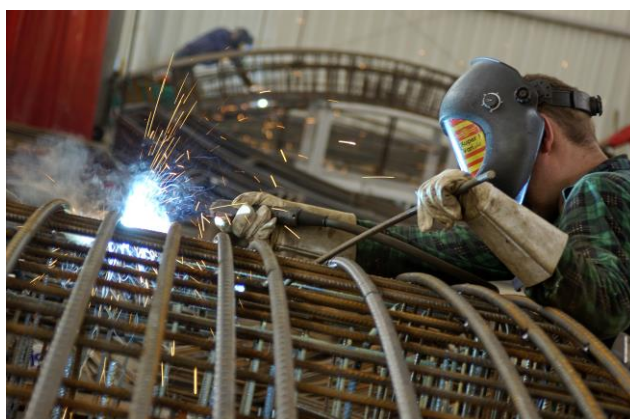
New Railway tunnel Karlsruhe-Basel

Construction lot 9.1 direction Schliengen-Eimeldingen

- 2 tunnel tubes to 9'385 m, hereof that 8'984 m of rock tunnel
- 19 cross connections (every 500 m)
- 2 ventilation shafts  $\varnothing = 6$  m, H = approx. 70 m

### ACTIVITIES

- TBM drive  $\varnothing = 11.16$  m
- 2 EPB-Earth pressure balanced shielded tunnel boring machines with single concrete segmental lining
- Concrete segments up to 9 bar water pressure
- Thickness of the segments; D = 60 cm
- Concrete sole with shoulders
- Fire-fighting dry and wet water pipes
- Concrete lining for cross connections with up to 9 bar pressure
- Installation of handrails and doors facilities



10.10.2018



**Marti Tunnel AG**

Seedorffeldstrasse 21 3302 Moosseedorf Tel. +41 31 388 75 10 [www.marti-tunnel.ch](http://www.marti-tunnel.ch) [tunnel@martiag.ch](mailto:tunnel@martiag.ch)