



TUNNEL BELCHEN (STB), A2

HÄGENDORF (CH)

EMPLOYER

Federal roads office FEDRO, CH-4800 Zofingen

DESIGNER

IG STBelchen, c/o Emch+Berger AG, CH-3001 Bern
ILF Beratende Ingenieure AG, CH-8048 Zurich
Aegerter + Bosshardt AG, CH-4002 Basel

TIME OF COMPLETION

03.2015 – 06.2019

CONTRACT SUM

CHF 277 Mio.

EXECUTION OF THE WORK

ARGE Marti Belchen

CONSORTIUM PARTNERS

Marti Tunnel AG, CH-3302 Moosseedorf
Marti AG Basel, CH-4053 Basel
Marti AG Solothurn, CH-4500 Solothurn

LEAD COMPANY – TECHNICAL AND COMMERCIAL LEAD

Marti Tunnel AG, CH-3302 Moosseedorf

TUNNEL BELCHEN (STB), A2

HÄGENDORF (CH)

SCOPE OF THE WORKS

Double-track tunnel between Hägendorf (SO) and Eptingen (BL)

- Lot 080008
- Length 3'177 m

ACTIVITIES

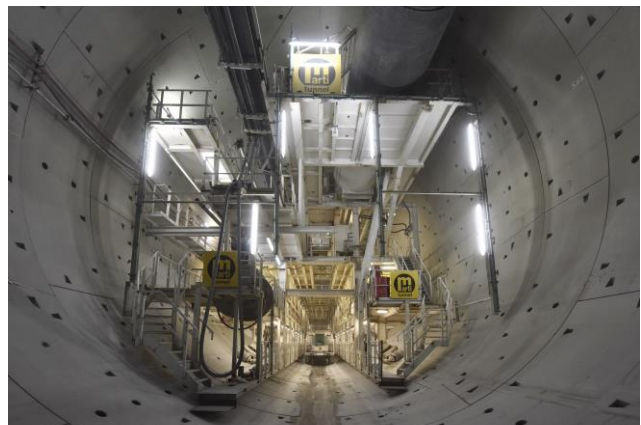
- Excavation with a single shield TBM \varnothing 13.97 m with precast segments (6+1) $d = 35$ cm and simultaneous inner lining, laying of the last cycle within 4 months
- Volume of excavation: 510'000 m³
- 11 cross cuts A = 20 – 40 m²
- Complete sealing with Hot-Melt process
- Inner lining d = 40 – 81 cm
- Technical gallery under the roadway
- Intermediate slab
- Benches

Ventilation gallery by drill & blast

- South portal L = 127 m, A = 22 m²
- North portal L = 234 m, A = 22 m²

GEOLOGY

- Gypsum keuper
- Opalinus clay
- Shell limestone
- Marl



14.05.2018